

RENEW COLLECTION



**deltec
homes**



“The feel and views of a round house were prime reasons we decided to build a Deltec. In addition, they had several other benefits that were attractive to us: double stud walls, in-house energy modeling, and their help walking us through decisions such as windows, siding, insulation, and more. It was a fun build that allowed us to bring our vision into reality.” -Chris S., Pennsylvania

“[Deltec] combines its expertise in net-zero-energy construction, honed over the past 10 years, with buying power and the ability to build cost-effectively.” -Susan Bady, Professional Builder, Dec. 2014 issue

“Sustainability, for me, is a way of life. When I decided to build a small retirement home, it had to be passive solar, active solar, fossil-fuel free and as close to net-zero as possible. Deltec’s Renew Collection was my answer!”
-Marie D., Virginia

“The quality of materials and of construction, as well as their teamwork, design skills, attention to detail, professionalism, dedication and their ability to build to standards far above the norm, entitles them to nothing less than the highest recommendation one can think of. Our home by far exceeds the building standards of any other construction company.” – Jonathon F., North Carolina

“Deltec is at the national forefront in the industry, setting an example for us all to reduce our carbon footprint, cut our energy bills, and come home to a healthier place to live.” -US Green Building Council President, CEO and Founding Chairman Rick Fedrizzi

“This is an all-electric house: heating, cooling, cooking, washing, lights, everything. With all our south facing windows, we can see the thermostat rise two or three degrees above set point when it is single digits outside. So yes, we are happy Deltec home owners.” -Kim R., Wisconsin



The Future of Homebuilding

Environmental responsibility is an integral part of Deltec's philosophy. In an ever-changing industry, it is one aspect of our company that has remained constant throughout almost 50 years in business. We believe that by taking the steps to a better environment today, we're creating a higher standard for the future.

The Renew Collection is a component of our ongoing mission to go beyond reducing environmental impact to creating a positive, restorative effect. Building a home that offers superior levels of energy efficiency and that will last generations is more attainable than ever and the success of this collection has validated what we've known since the beginning: high performance and net-zero homes will be the new standard of homebuilding.

A New Experience in Homebuilding

The Renew Collection was created to make sustainable living more practical. Each model is designed to be as energy efficient as possible without compromising on living space or functionality.

When you purchase a home from the Renew Collection, you're purchasing a high performance structural shell designed and engineered to use two-thirds less energy than a traditional house. We evaluate your location to determine which advanced wall and roof systems work best based on your climate. Your shell is then prefabricated in our facility and shipped to your jobsite to be assembled and finished by your local builder.



We Make It EASY

Deltec makes it easier than ever to build your high performance or net-zero home. The years of research and development behind the Renew Collection means we've done all the work for you, making the building process faster, easier and cost effective.

PREFABRICATED AND DELIVERED TO YOUR JOBSITE Once it's prefabricated in our state-of-the-art facility, your home is delivered to your job site and can be assembled and dried in by your local builder in a matter of days.

BUILD ANYWHERE Whether you're building in the mountains, on the beach or internationally, our home packages can be shipped and built anywhere. In fact, we've shipped to all 50 states and six different continents.

2/3 LESS ENERGY Each home in the Renew Collection is designed to use two-thirds less energy in comparison to an average home. This allows for a significantly smaller solar array so the remaining one-third can be powered with renewable energy, making yearly energy use net-zero.


PREDESIGNED FOR YOUR CONVENIENCE The pre-designed floorplans eliminate the time and stress of creating a custom high performance or net-zero home.

DESIGNED FOR YOUR CLIMATE Our Green Building Department will work with you to select the best energy efficient features for your home based on your specific climate. We can also help achieve green building certifications, such as Energy Star or LEED. See page 13.

CONTROL OF FINISHED COST We provide the high performance structural shell of your home. Since it's assembled and completed by your local builder, you control your costs by selecting interior finishes to fit your budget and personal taste.

OPTIONS AVAILABLE From siding to windows, garages to decking, solar hot water to fresh air ventilation, personalize your home package with a full list of additional options. See page 15.

BUILDER ASSISTANCE Your builder can contact our in-house 24-hour construction expert with any questions or we can provide an on-site technical assistant to help assemble your shell.



"I'm interested in energy efficient building concepts and we've always wanted to build a net-zero home. I'm a carpenter and saw quality in the Deltec construction on a tour of the facility. The staff was also very helpful and has great knowledge and experience with the whole building process."

-Rick W., North Carolina



RIDGELINE A + B

Passive solar layout with a modern flair: ample south facing glass, vaulted ceilings and high clerestory windows in end bedrooms give this house an open, airy feel. Side entry porches allow abundant outdoor living space.

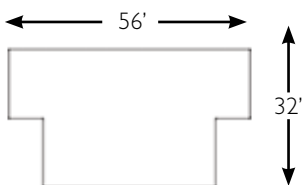
Shown in Rendering

Ridgeline A on a slab foundation with pre-painted fiber cement lap siding and Marvin Integrity window package.



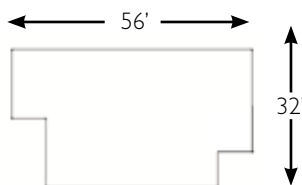
Ridgeline A

- 3 bedrooms, 2 baths
- Includes 2 covered porches, giving up to 256 outdoor sq. ft.
- 1536 sq. ft.



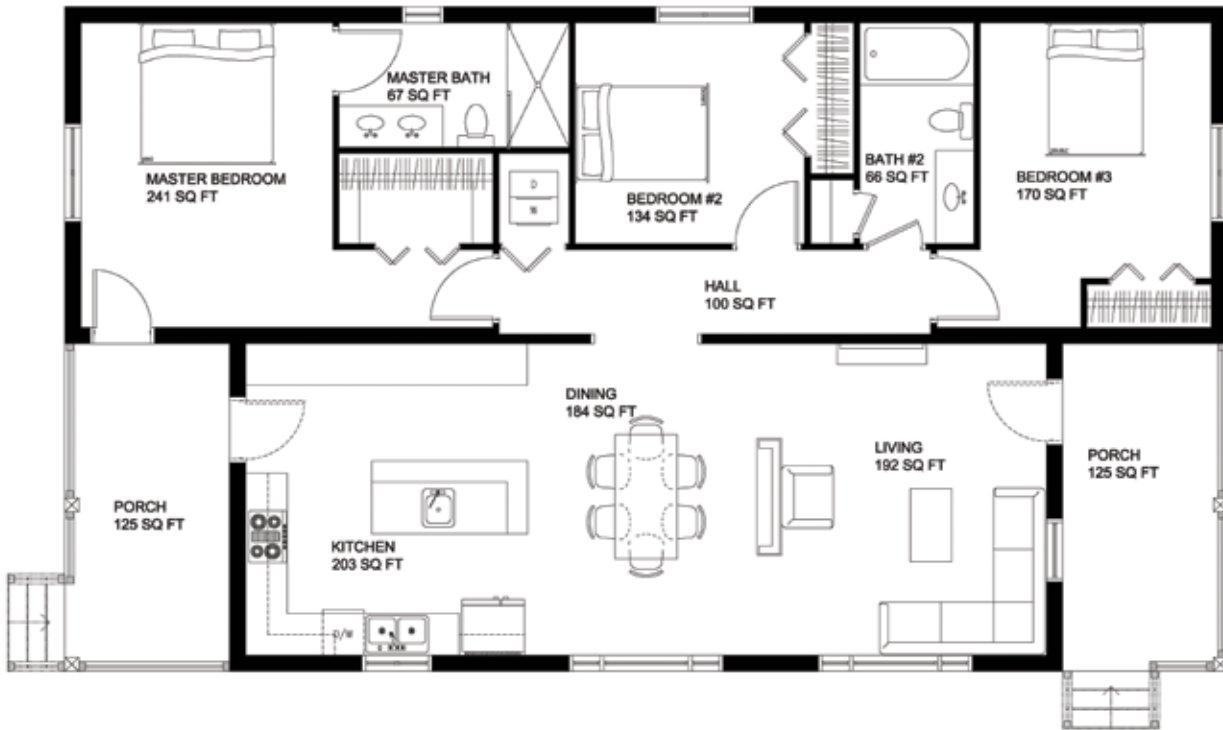
Ridgeline B

- 3 bedrooms, 2 baths
- Optional stairs to a basement
- Includes 2 covered porches giving up to 154 outdoor sq. ft.
- 1572 sq. ft.

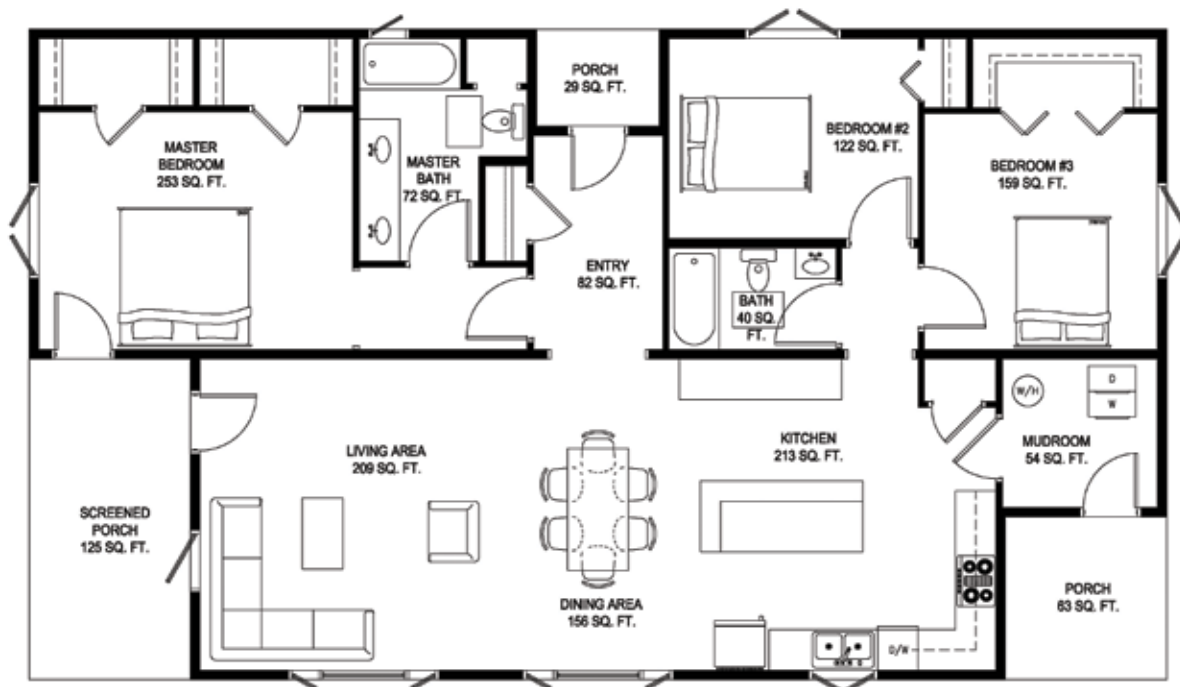


Options

- Convert part of porch space into 8x8 or 8x12 mudrooms
- Pre-installed window package
- Pre-painted siding packages
- Green options, see page 17



RIDGELINE A: 1536 sq. ft.



RIDGELINE B: 1572 sq. ft.



RIDGELINE C + D

The Ridgeline with a larger footprint. Designed for high performance and premium green living, Ridgeline C and D both feature vaulted ceilings, plenty of windows, 2126 square feet of indoor living space and 400 square feet of outdoor space.

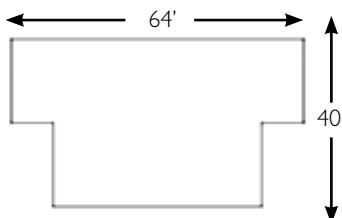
Shown in Rendering

Ridgeline C on a slab foundation with pre-painted fiber cement lap siding and Marvin Integrity window package.



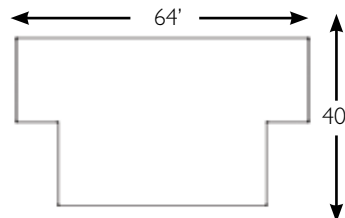
Ridgeline C

- 3 bedrooms, 2 baths
- Optional stairs to a basement
- Includes 2 covered porches giving up to 400 outdoor sq. ft.
- Office/bonus space
- 2126 sq. ft.



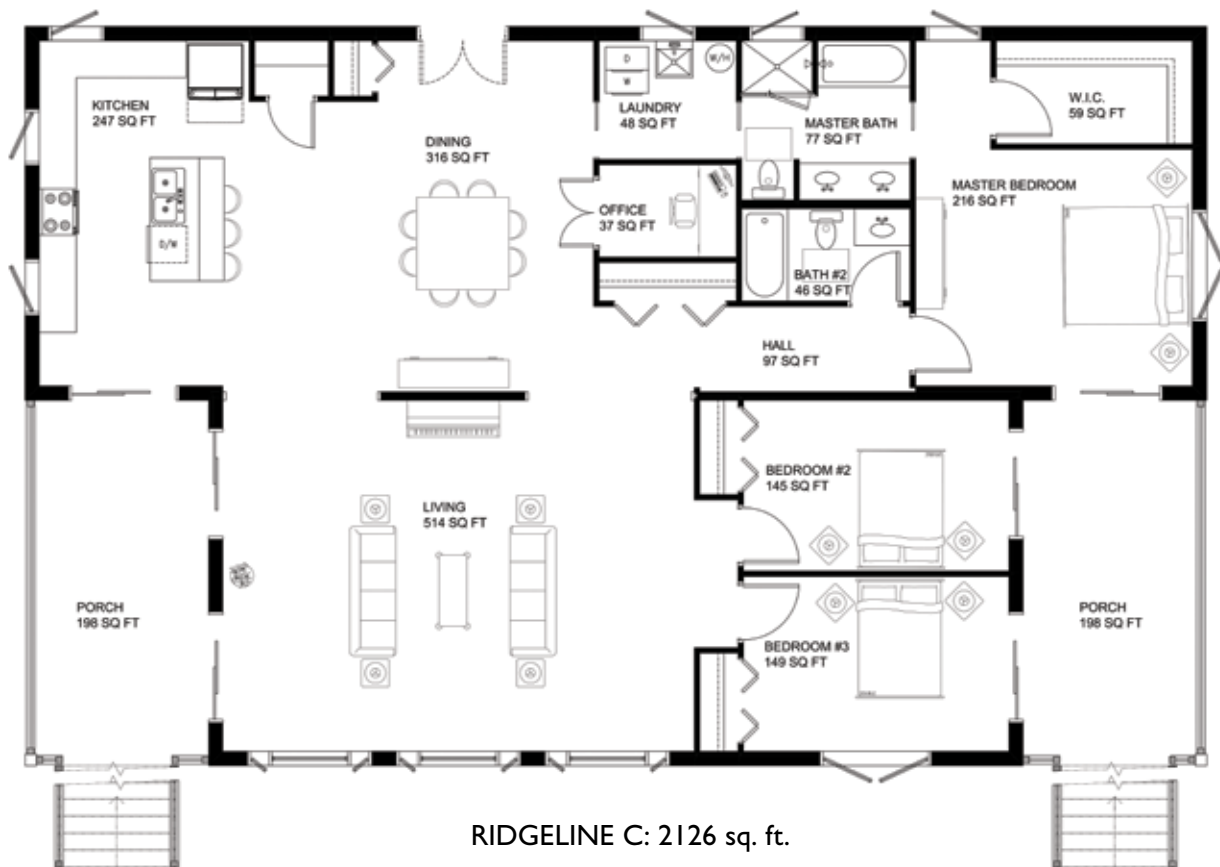
Ridgeline D

- 3 bedrooms, 2 baths
- Optional stairs to a basement
- Includes 2 covered porches giving up to 400 outdoor sq. ft.
- 2126 sq. ft.

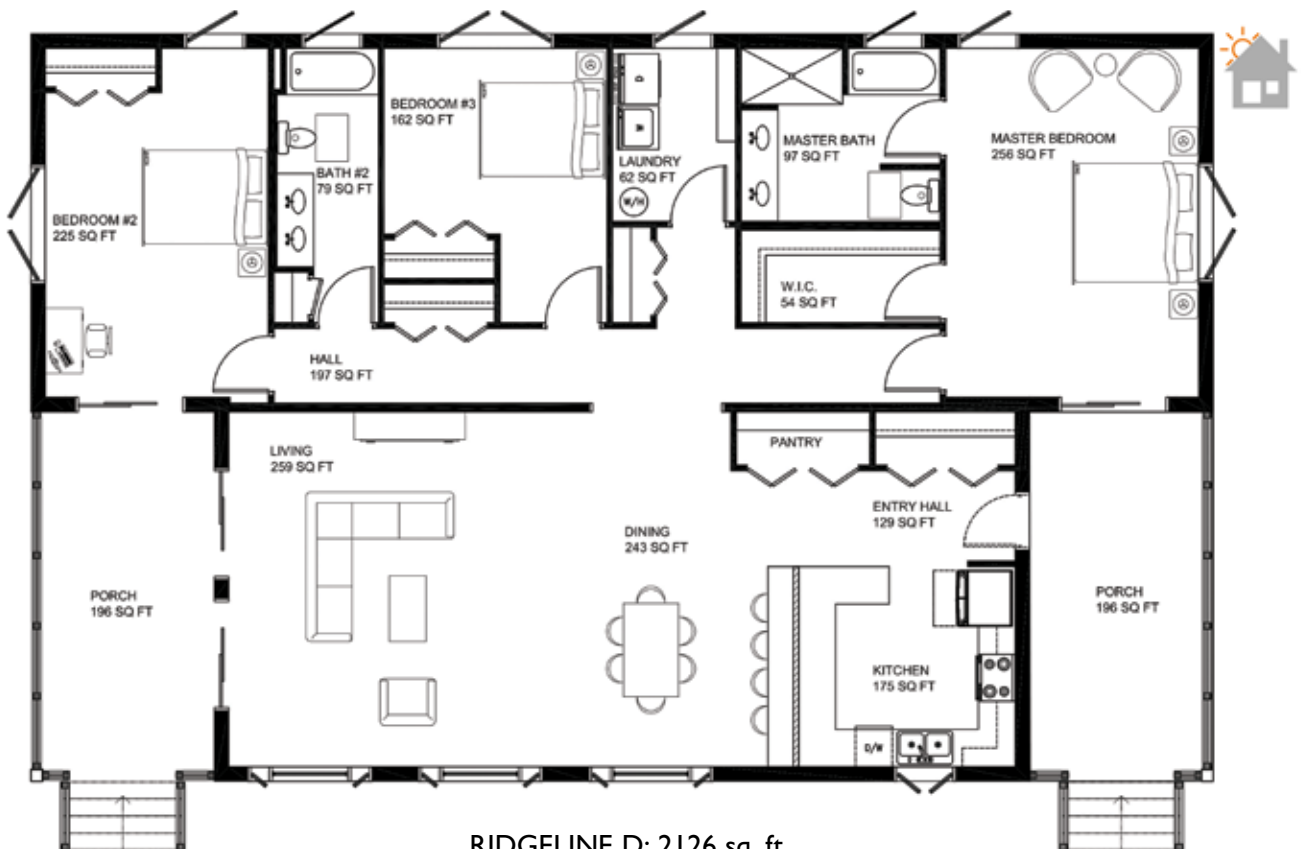


Options

- Pre-installed window package
- Pre-painted siding packages
- Decking package for porches
- Green options, see page 17



RIDGELINE C: 2126 sq. ft.



RIDGELINE D: 2126 sq. ft.



RIDGELINE E + F

The modern Ridgeline style with a smaller footprint. With 1232 and 1120 square feet, this model is perfect if you have a narrow lot or if you're looking to live large in a small home.

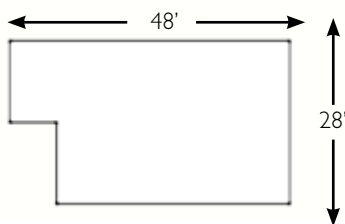
Shown in Rendering

Ridgeline E on a slab foundation with pre-painted fiber cement lap siding and Marvin Integrity window package.



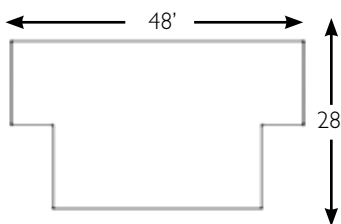
Ridgeline E

- 2 bedroom, 2 baths
- Includes a covered porch offering 109 square feet of outdoor living space
- 1232 sq. ft.



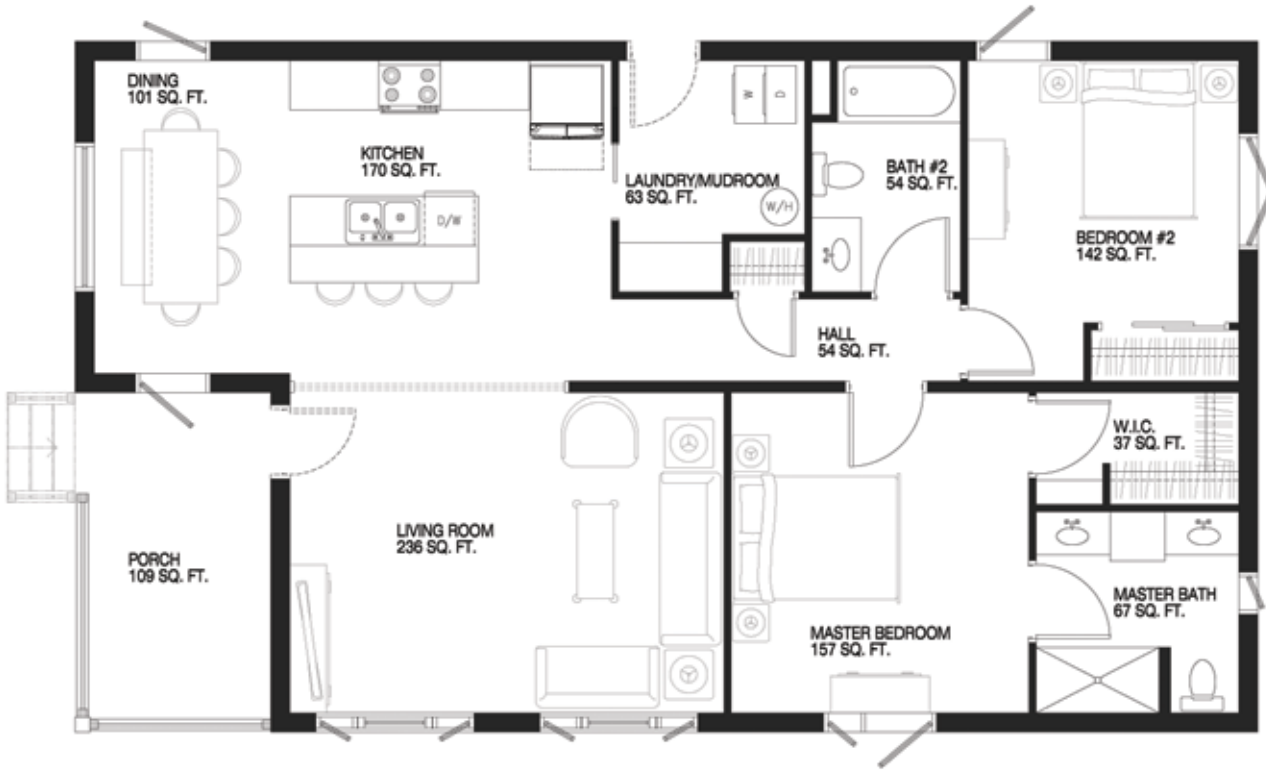
Ridgeline F

- 2 bedroom, 2 baths, plus bonus office space
- Includes two covered porches offering 218 square feet of outdoor living space
- 1120 sq. ft.

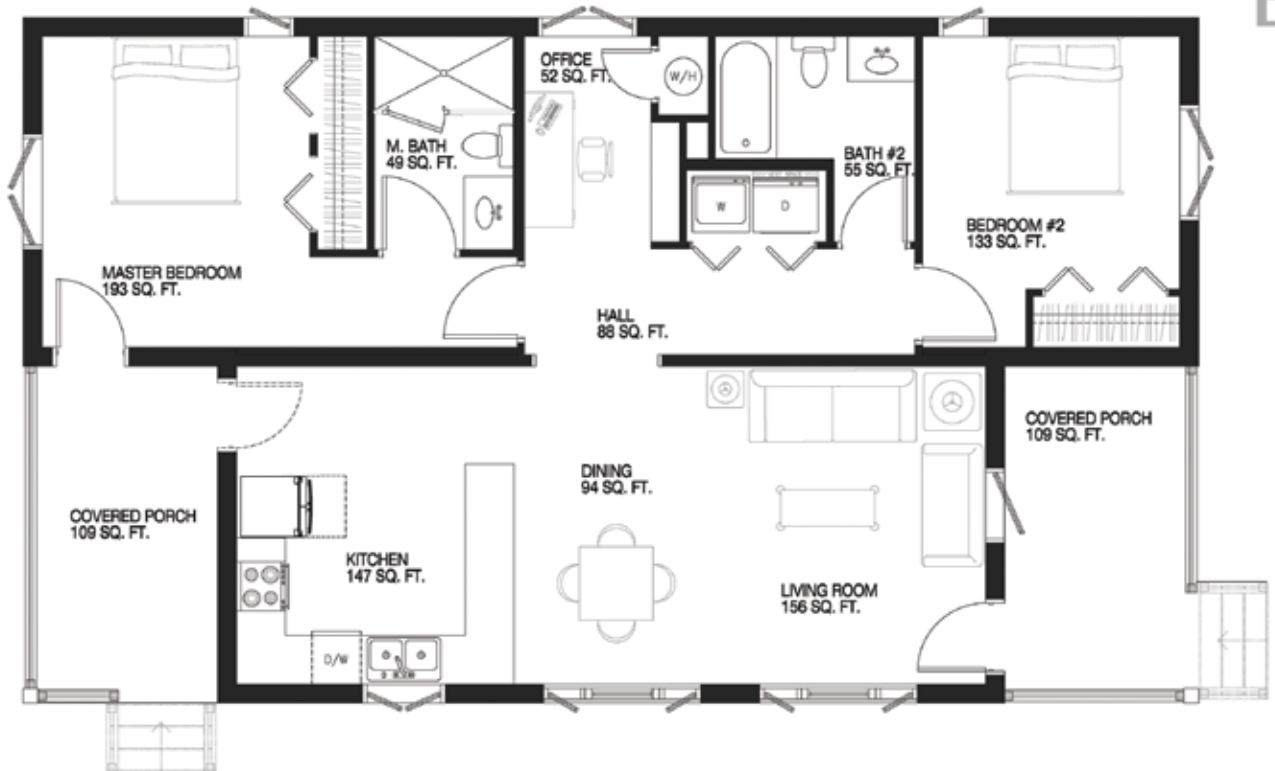


Options

- Pre-installed window package
- Pre-painted siding packages
- Convert part of porch space into 8x7 or 8x14 mudrooms
- Green options, see page 17



RIDGELINE E: 1232 sq. ft.



RIDGELINE F: 1120 sq. ft.



SOLAR FARMHOUSE

A modern take on a traditional home, the Solar Farmhouse features passive solar design, an open floorplan and plenty of outdoor space, making it perfect for those who want the classic style with high performance amenities.

Shown in Rendering

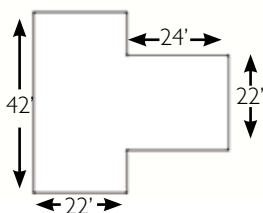
Solar Farmhouse on a slab foundation with pre-painted Boral® vertical poly-ash siding, passive solar awnings and Marvin Integrity window package with grills.



Solar Farmhouse

- 3 bedrooms, 2.5 baths
- 2029 sq. ft.
- Includes a covered front porch, offering 128 square feet of outdoor space
- Optional covered back porch adds an additional 240 square feet of outdoor space

1st floor

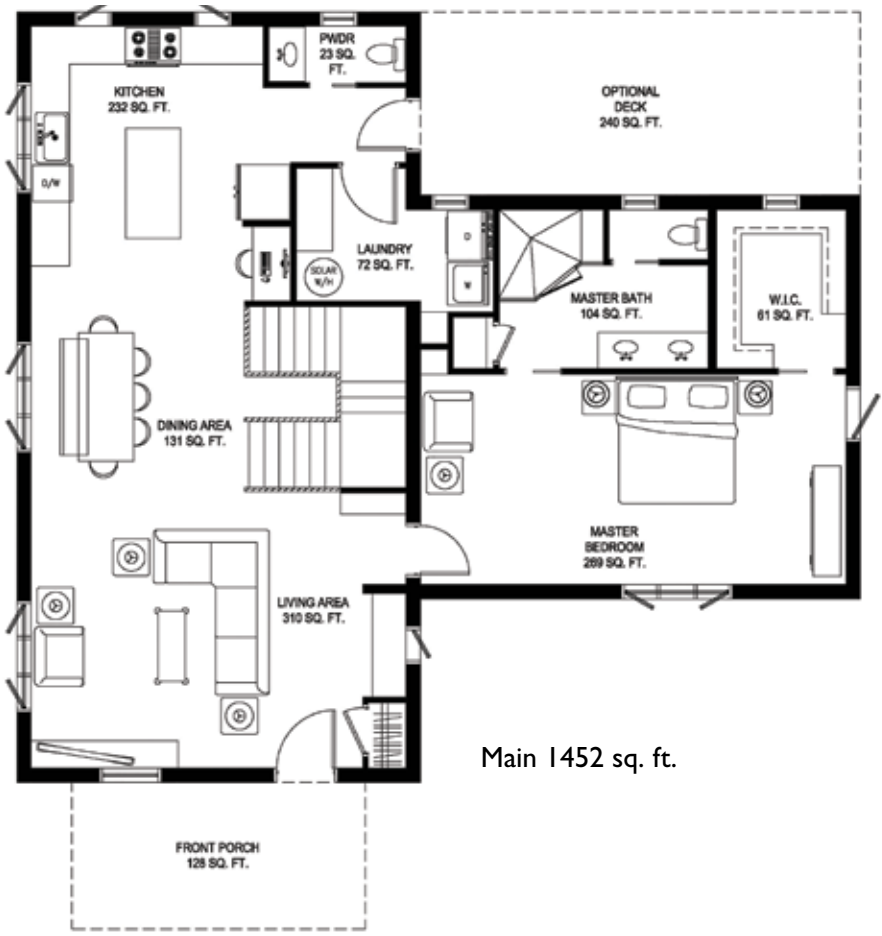


2nd floor

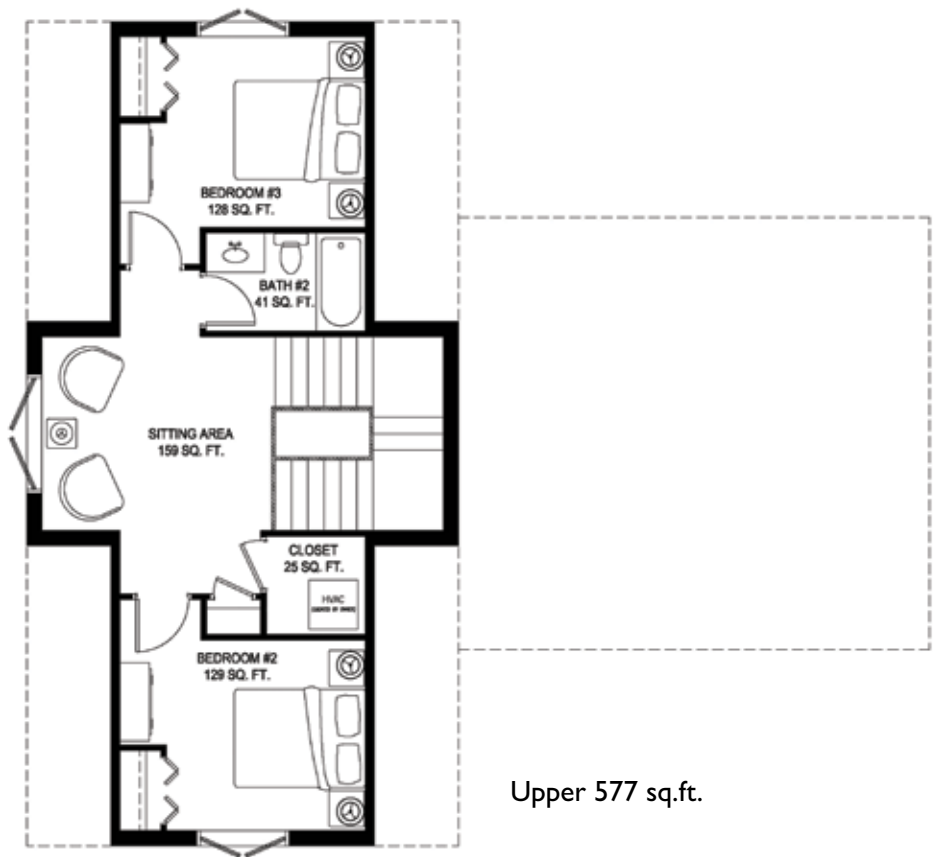


Options

- Covered back porch
- Decking kits for porches
- Passive solar awnings
- Pre-installed window package
- Pre-painted siding packages
- Green options, see page 17



Main 1452 sq. ft.

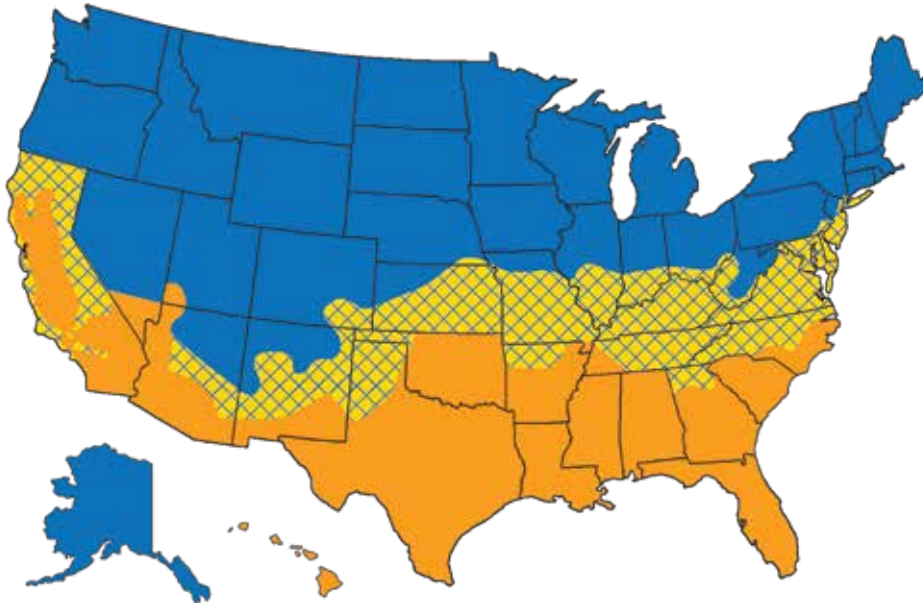


Upper 577 sq.ft.

Deltec's Applied Green Technologies: Building specifically for your climate zone

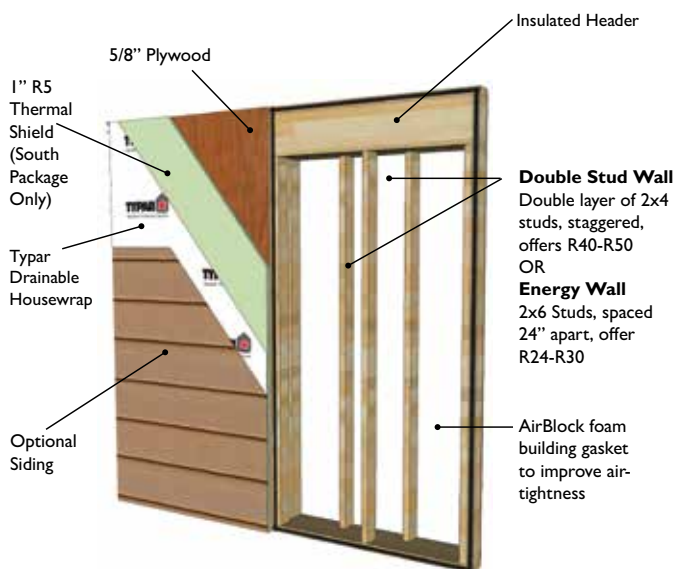
Your Renew Collection home comes with energy efficiency features chosen specifically according to your climate zone.

Climate Map



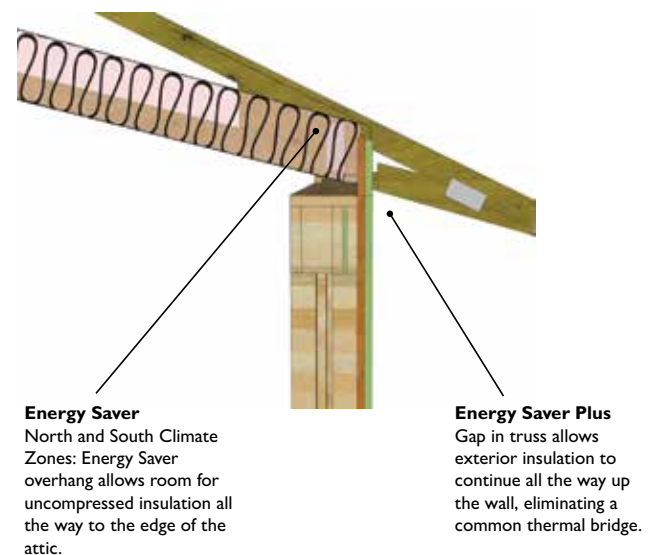
- North**
 Achieve super-insulation and superior air-tightness with our Double-Stud Wall and Energy Saver Plus Overhang, and optional tripane windows.
- South**
 Achieve super-insulation and superior air-tightness with our Energy Wall, Energy Saver overhang, and optional Energy Star certified double pane windows.
- Intermediate**
 Work with your sales consultant and our green department to determine the best energy efficiency for your home.


Advanced Wall Systems




Advanced Truss Systems


Compatible with vented or unvented attic assemblies



 **AirBlock Gasket** A foam gasket applied to wall systems in Deltec's factory, between the stud framing and exterior sheathing, to create an extremely air-tight wall system. Air-tightness dramatically increases a home's energy efficiency by reducing the introduction of unconditioned outside air.

Advanced Framing A method of reducing material use and improving energy efficiency by reducing the amount of lumber used while framing. The wall systems in the Renew Collection use advanced framing techniques, such as increasing the spacing between studs (Energy Wall) and staggering the placement of studs (Double Stud Wall).

 **Double Stud Wall** Wall system included on Renew Collection shell packages with the "North" climate package. Wall design features two layers of 2x4 walls to allow homeowner to greatly exceed code minimum insulation values, practicing "super-insulation." Wall design also includes the AirBlock Gasket.

 **Energy Wall** Wall system included on Renew Collection shell packages with the "South" climate package. Wall design features 2x6 wall thickness for additional insulation, Advanced Framing, R-5 Thermal Shield package and Air Block Gasket.


HERS Index The Home Energy Rating System (HERS) index is the industry standard by which a home's energy efficiency is measured. The scale runs 1-100, with lower scores indicating better energy efficiency.

High Performance Home The National Institute of Building Sciences defines a high performance building as a building that optimizes all major high performance building attributes, including energy efficiency, durability, and life-cycle performance. Deltec extends that definition, applying high performance standards to every aspect of the structure, including precise structural decisions based on climate zone.

Net-Zero Home Also known as a zero-energy home, a home with zero net energy consumption, meaning that the total amount of energy used by the building on an annual basis is roughly equal to the amount of renewable energy created at the site. Most Net-Zero homes are also, by definition, high performance homes, as it is more cost effective to add renewable energy to a structure that is already optimized for energy efficiency.

Panelized Building System Made of or having prefabricated wall, floor, and roof sections that are shipped to and assembled at the building site.

Passive Solar Design A way to reduce the heating and cooling load by the appropriate use of windows, shading, insulation, thermal mass, and other passive measures.


Look for the  symbol to see which models have a passive solar design.

Photovoltaic A solar panel that generates electricity from sunlight. Often installed on homes as a way to generate energy on-site, reducing the energy a home has to purchase from the conventional power grid.

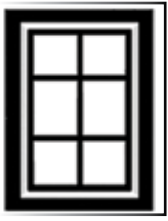
Renewable Energy Electricity generated from sources that are able to be renewed without continued degradation of the landscape, or of the availability of the energy source. The most commonly used form of renewable energy for individual homes is solar photovoltaic panels (solar panels).

Super-Insulation The practice of insulating a new home to a much higher degree than is required by code in order to greatly reduce the heating and cooling needs of a home. Super-insulation is the most cost effective strategy toward building an affordable high performance or net-zero home. Your Renew collection building shell comes with wall and truss systems that allow your home to be super-insulated in your climate.

Thermal Mass Thermal mass is a heat storage material such as water, concrete, or masonry, used in passive solar design to capture and store solar heat brought in by south-facing window glass.

 **R5 Thermal Shield** A layer of foam insulation installed on the outside of our wall panels, behind the siding. This layer of insulation blankets the entire wall, including the wood framing, giving an extra R5 to the total wall insulation value.

Additional Options: Products to finish your home package



Windows Supplied and pre-installed in our factory: Marvin Integrity triple pane casement, awning, and picture windows for the *North* zone, and Energy Star certified double pane casement, awning, picture, and sliding glass doors for the *South* zone.



Pre-Finished Siding Options are available to match the architectural style of each home. Fiber cement and cedar siding can be pre-painted through our factory finish process. On our round models, we can pre-install siding in our factory.



Porches and Decking

Rectangular models come with covered porches, with decking options available. Round models are available with a wide variety of optional decks.



Roofing On all models, we offer a durable and low-waste metal shingle roof in a variety of colors.



Garages and Carports

Detached garage options can keep your vehicle protected from the elements, while adding roof space for solar. One, two and three car options are available.



Passive Solar Awning

Because the roof overhang only shades the upstairs south-facing windows on our two-story models, this is a great option to provide the appropriate shading on the first floor as well, making your home cool and comfortable during summertime.



Energy Modeling, Design or Certification Your net-zero kit comes with basic energy modeling from a certified HERS rater.

A Five-Step Process: Simple & Direct

Once you have decided that a Renew Collection home is for you, we make it very easy to get started. Our staff will work with you to select options and prepare your home's delivery and construction.



Step One: Getting Started

Place your initial deposit towards the purchase of your Renew Collection home and start working with your design consultant.



Step Two: Team Work

Your personal design consultant will guide you through the planning phase and work with you to select the options and features best suited to your budget and location.



Step Three: Design Finalized

Once you have finalized options and approved your home's floor plan, production is scheduled. This typically occurs about 8 weeks prior to your intended delivery date.



Step Four: Production Begins

Fabrication of your new home begins in our facility. Once finished, your home package is stored inside our facilities and staged for delivery to your jobsite.



Step Five: Delivery

Your shell package is delivered and typically can be assembled and dried in within 5-7 days. Your builder can then begin work on the interior finish.

Deltec by the Numbers

Over 5,000 homes built across all 50 states and 30 different countries since Deltec Homes started in 1968

An average of 80% of waste material is diverted from the landfill and into local recycling and re-use efforts, such as Habitat for Humanity

We were the first prefabricated builder in the US to become a Certified B Corp

Over 75% of Deltec homes built exceed local energy codes by 30% or more

Last year, 392 Megawatt hours of wind power is purchased for use in our operations

99.9% of materials used to build a Deltec are made in America

273 solar panels on the roof of our production facility allows us to produce every Deltec home with 100% renewable energy

The average HERS score for our homes in 2016 was 47

Last year, 68 Megawatt hours of electricity is produced by our rooftop solar array

Last year, we saved 25,000 lighting kilowatt hours in our facility

Our average employee tenure is over 9 years

We spend an average of 144 hours per year volunteering for organizations like Meals on Wheels

Last year, 554 Megawatt hours of electricity was saved due to the energy efficiency features built into our homes

For us, environmental responsibility doesn't mean just 'lessening our impact', rather, it means finding ways to have a restorative effect, a positive effect, on our planet through the homes we build. Making decisions with these ideals is not always easy or simple - but it's the right thing to do.

Steve Linton
President Deltec Homes
(seen here on the roof of Deltec's manufacturing facility)



**deltec
homes**



Deltec Homes
69 Bingham Rd.
Asheville, NC 28806

deltechomes.com
Tel 828.253.0483



Edition VIII - November 2020